

## Ground Floor



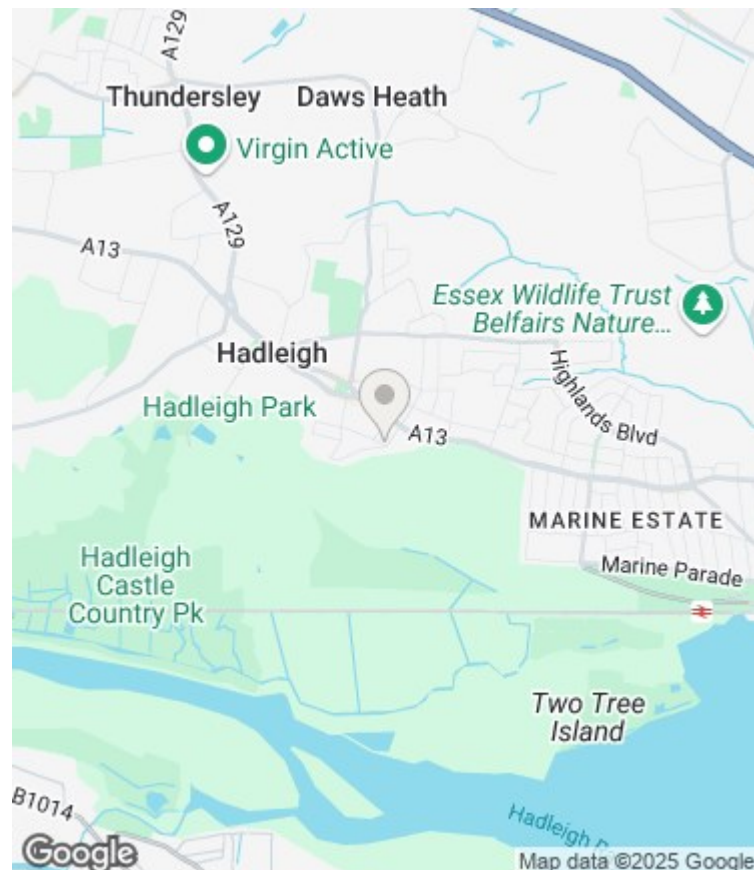
This floorplan is for illustration purposes only. The room sizes, locations of doors, windows and other features are approximate.  
Plan produced using PlanUp.

Energy Efficiency Rating		
	Current	Potential
Very energy efficient - lower running costs		
(92 plus) <b>A</b>		
(81-91) <b>B</b>		
(69-80) <b>C</b>	<b>77</b>	<b>77</b>
(55-68) <b>D</b>		
(39-54) <b>E</b>		
(21-38) <b>F</b>		
(1-20) <b>G</b>		
Not energy efficient - higher running costs		
<b>England &amp; Wales</b>	EU Directive 2002/91/EC	

### Viewing

Please contact our Sales & Letting Office on 017027 10555 if you wish to arrange a viewing appointment for this property or require further information.

These particulars, whilst believed to be accurate are set out as a general outline only for guideline and do not constitute any part of an offer or contract. Intending purchasers should rely on them as statements of representation of fact, but must satisfy themselves by inspection or otherwise as to their accuracy. No person in this firm's employment has the authority to make or give any representations



**Turner Estates 34 Broadway, Leigh-on-Sea, Essex, SS9 1AJ**  
**01702710555**  
**info@turnerestates.co.uk**



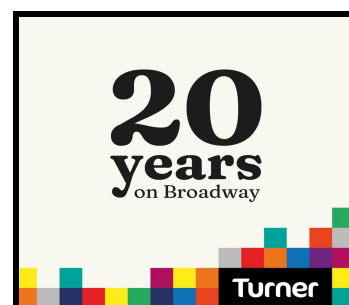


Modern Purpose Built Apartment  
NO CHAIN  
One Double Bedroom w/wardrobes  
Own allocated driveway Parking  
Ideal for first time buyers

Ground Floor  
Central Location/Close to Hadleigh Castle & Shops  
Open Plan Kitchen/Lounge  
Communal Garden

**Beech Road, Benfleet**

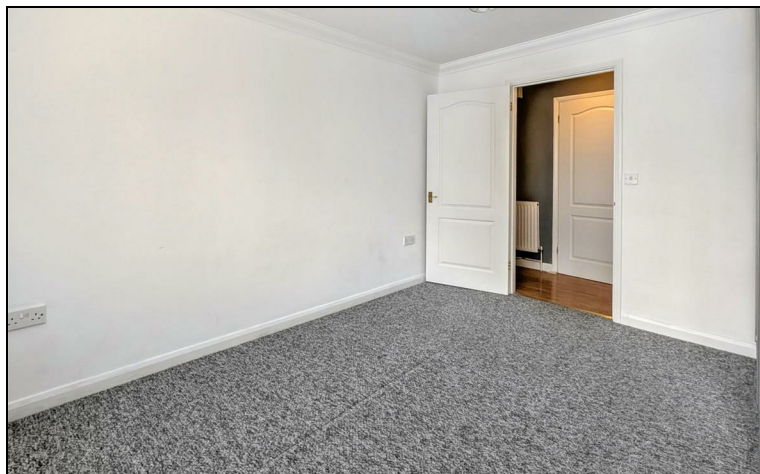
**£185,000**





BEAUTIFULLY PRESENTED ONE BEDROOMGROUND FLOOR FLAT // NEARHADLEIGH HIGH STREET  
// LARGE OPEN LOUNGE/KITCHEN/DINER // OFF STREET PARKING // COMMUNAL GARDEN // Being  
sold with NO ONWARD CHAIN // VIEWING IS AN ABSOLUTE MUST.

 1  1  1  C Council Tax Band : A

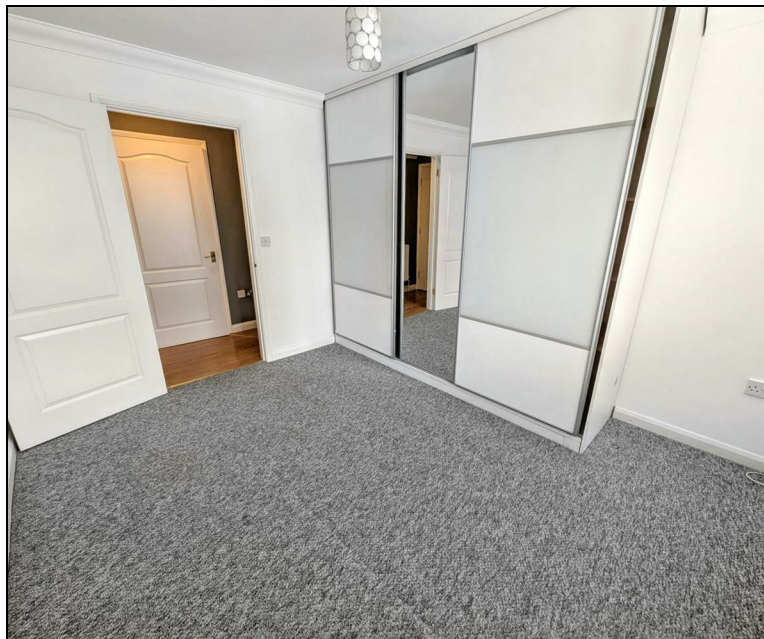


**@turnersleigh**



**Turner Sales & Lettings**





KITCHEN/LOUNGE/DINER  
21'5" x 10'5" (at furthest  
point)

BEDROOM  
11'7" x 10'1"

BATHROOM  
6'10 x 5'11

OFF STREET PARKING

USE OF COMMUNAL  
GARDEN



[www.turnerstates.co.uk](http://www.turnerstates.co.uk)

01702 710555

